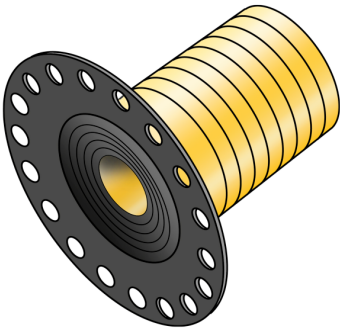


# KELOX

## KM534 KELIT wall bracket fitting sealing sleeve 1/2"

7704270

### Areas of application



Wall bracket fitting seal for drywall and normal installation protruding from the wall, incl. 60mm long plastic sleeve tube that can be cut to length. The installation plug can be screwed into the wall bracket fitting and removed easily during second fix work.

Suitable for KMU480, KMU480L, KMU480Z, SMX480, NP480 and KMP480X wall bracket fittings.

# Specifications

Product information	
VPE1	10,00 SA1
VPE2	50,00 KT1
VPE3	300,00 KT2
weight	0,0180 KGM
text	KELIT wall bracket fitting sealing sleeve
INTRNR	40169997
main material group	KELOX
material group	KELOX accessories
code	KM534

Art. No	label
7704270	1/2"