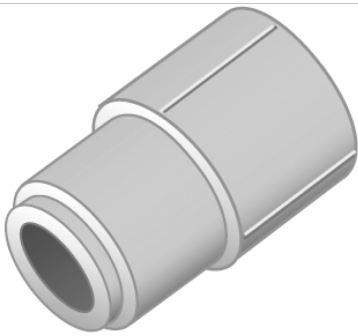


KELEN

KE41 KELEN PP-RCT reducer male/female 32/20

2453501

Areas of application



KELEN PP-RCT Polyfusion welding fitting for connecting pipes with fittings made of the same material (no reduction of internal diameter)

Approvals:



Specifications

Article information

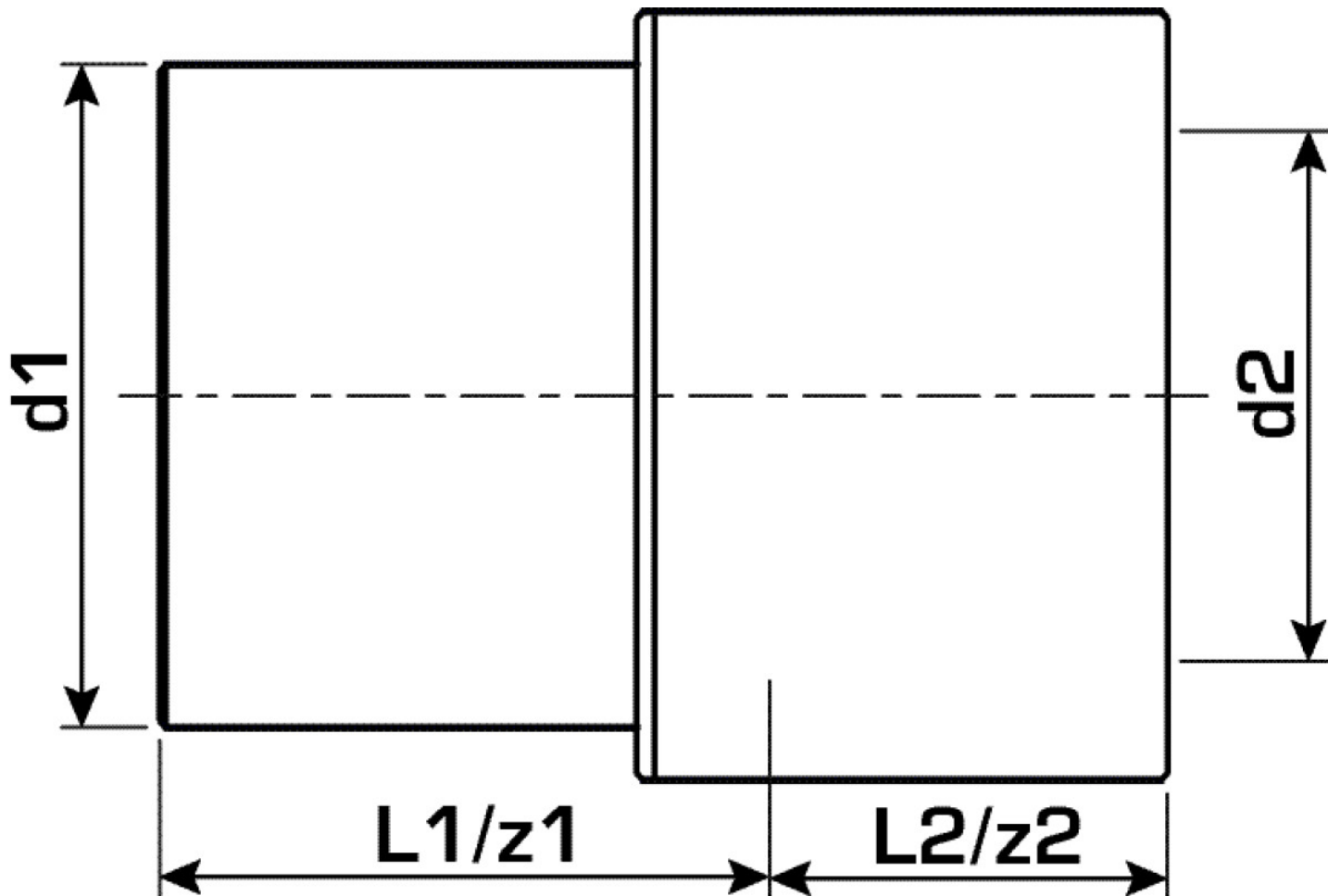
| | |
|-----------|-----------------------|
| port 1 | Plastic welded sleeve |
| port 2 | Plastic welded end |
| execution | 1-part |
| design | straight |

Technical properties

| | |
|------------------------------------|--------|
| maximum working pressure at 20 ° C | 20 bar |
|------------------------------------|--------|

Product information

| | |
|---------------------|----------------------------------|
| VPE1 | 10,00 SA1 |
| VPE2 | 120,00 KT1 |
| VPE3 | 720,00 KT2 |
| VPE4 | 11520,00 PAL |
| weight | 0,0200 KGM |
| text | KELEN PP-RCT reducer male/female |
| INTRNR | 39174000 |
| main material group | KELEN |
| material group | KELEN plastic fittings |
| code | KE41 |



| Art. No | label | d1 mm | d2 mm | L1 mm | L2 mm | z1 mm | z2 mm |
|---------|-------|-------|-------|-------|-------|-------|-------|
| 2453501 | 32/20 | 32 | 20 | 26 | 17 | 26 | 17 |